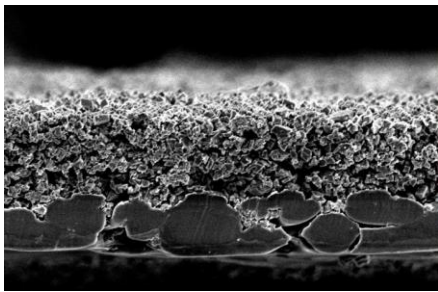




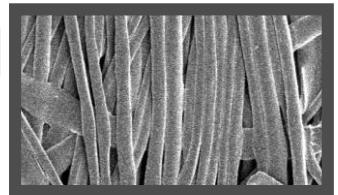
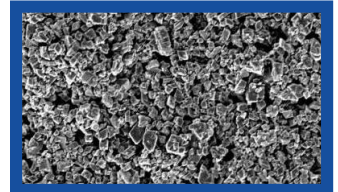
Non-Woven Separator with Ceramic Coating NanoBaseX (For LIB)

NanoBaseX is a polyester non-woven separator with ceramic coating, which is suitable for Lithium Ion Batteries. Higher safety and longer cycle life will be realized with NanoBaseX.



Ceramic Coated Layer

Polyester Non-Woven



Features

High heat resistance

← Polyester fiber Ceramic layer

- ✓ Higher safety offered by high heat resistance.
- ✓ Improved drying efficiency with higher temperature.

High electrolyte retention

← Non-woven




- ✓ Shorter processing time for electrolyte injection.
- ✓ Longer cycle life.

Properties

Item	OZ-S30	OZ-S25
Thickness [μm]	30	25
Tensile Strength (MD) [N/m]	1,500	1,200
Porosity [%]	55	56
Heat shrinkage (MD) [%] (180°C30min)	<5.0	<5.0

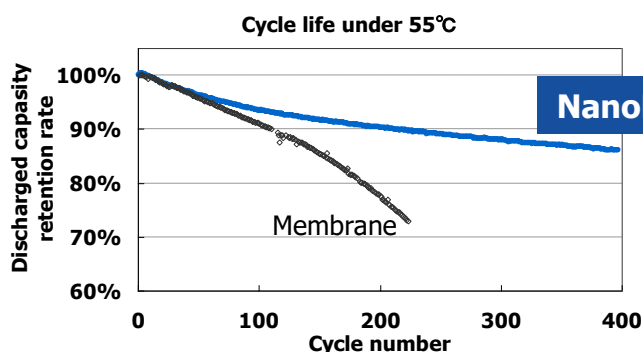
※These are the representative values with no guarantee.

Nail penetration test

NanoBaseX (OZ-S30)	PP membrane 19 μm + both side 3 μm ceramic coat.	PE membrane 21 μm
		
80 sec after penetration	3.4 sec after penetration	5.2 sec after penetration

- Cathode: LNO / Anode: Graphite
- Cell capacity: 1.7Ah
- Nail diameter: 4.5mm / Speed: 20mm/sec

Cycle life



- Cathode: LMO
- Anode: Graphite
- Cell Capacity: 10Ah

*The data in this document are only for reference and don't ensure the same performance in your condition.